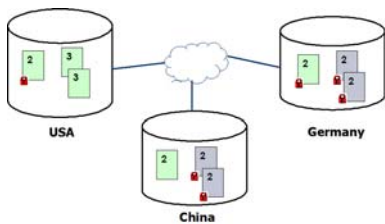


InnoCielo Global Collaboration Framework



Engineering Collaboration Throughout Global Organizations

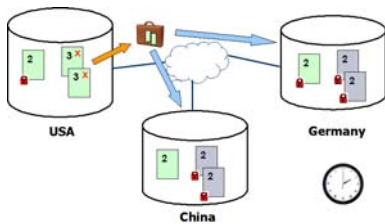
product sheet



Exchange Engineering Data Across the Enterprise and with External Contractors

In the ongoing quest for enhancing productivity, companies worldwide are looking for more efficient ways to share information across the enterprise and with external contractors. Many businesses are lacking ways to automate data collaboration and need to rely on the manual handling of information.

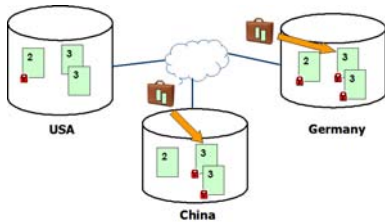
Collaboration Solution



The InnoCielo Global Collaboration Framework helps companies to tackle the challenges posed by the need for collaboration during complex engineering projects and asset management activities.

The InnoCielo Global Collaboration Framework provides an automated exchange of documents and metadata between InnoCielo Meridian Enterprise Vaults at different sites using the internet. The Framework also includes functionality to automate and manage the data exchange with InnoCielo BriefCase technology.

Features



The InnoCielo Global Collaboration Framework connects local data vaults at different locations and automates document exchange. Core functionalities include:

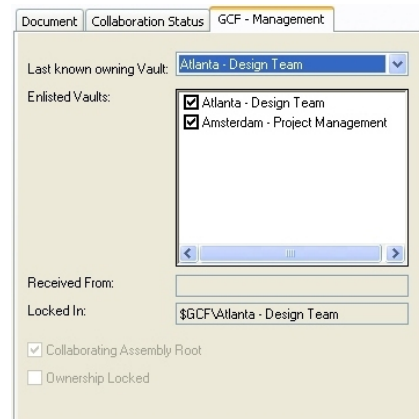
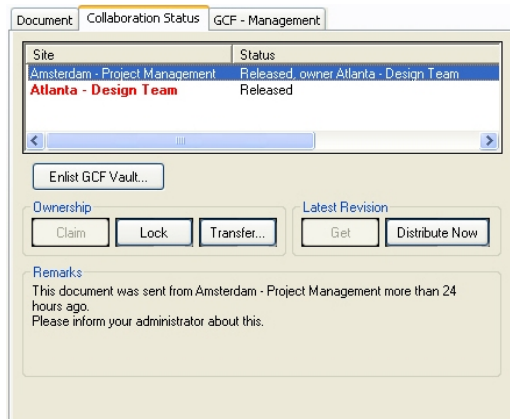
- Collaboration on complex designs (3D-CAD)
- Connectivity through WAN/HTTP
- Easy to configure and secure
- Integrates with existing vaults
- Real-time status overview
- Simple and securable user interface

Advantages

- Easy exchange of information
- Extensive collaboration options
- User-friendly functionality
- Global versioning

Benefits

- Improve collaboration
- Ensure quality
- Increase accuracy
- Reduce costs





Taking EDM to the Enterprise

1 BlueCielo ECM Solutions

BlueCielo ECM Solutions (formerly Cyco Software) provides Engineering Content Management (ECM) solutions for multiple vertical industries, including utilities, oil & gas, petrochemical, pharmaceutical, government, transportation and process and discrete manufacturing. BlueCielo has over two decades of industry experience with more than 275,000 users in 50+ countries worldwide. The company has offices in the USA, UK, Russia, Germany, and the Netherlands and an extensive global network of established partners. BlueCielo ensures a high level of service and support on a truly worldwide scale for its leading software solutions InnoCielo Meridian Enterprise and InnoCielo Teamwork (formerly AutoManager Meridian and AutoManager TeamWork).

2 Questions?

For further information on this subject or about BlueCielo, please feel free to contact us by phone, email info@bluecieloecm.com or visit our websites.

3 Contact Info

Corporate Headquarters
BlueCielo ECM Solutions
Handelskade 49
2288 BA Rijswijk
The Netherlands
T +31 70 413 37 00
F +31 70 413 37 01
info@bluecieloecm.com
www.bluecieloecm.com

Americas
2400 Lake Park Drive
Suite 450
Atlanta, GA 30080
USA
Toll-Free 800 323 29 26
T +1 404 634 33 02
F +1 404 633 46 04
info@bluecieloecm.com
www.bluecieloecm.com

Europe, Asia, Pacific Rim,
Middle East, Africa
Handelskade 49
2288 BA Rijswijk
The Netherlands
T +31 70 413 37 00
F +31 70 413 37 01
info@bluecieloecm.com
Benelux: www.bluecielo.nl

DACH
Essener Strasse 5
46047 Oberhausen
Germany
T +49 208 305 85 00
F +49 208 305 85 025
info@bluecieloecm.com
www.bluecielo.de

United Kingdom, Ireland
Empress Business Centre
380 Chester Road
Manchester
M16 9EA
United Kingdom
T +44 161 877 55 79
F +44 161 877 55 80
info@bluecieloecm.com
www.bluecielo.co.uk

Russia, Russia and CIS countries
Korolev Street 6
249030 Obninsk
Kaluga region
Russia
T +7 (48439) 63079
F +7 (48439) 65095
info@bluecielo.ru
www.bluecielo.ru